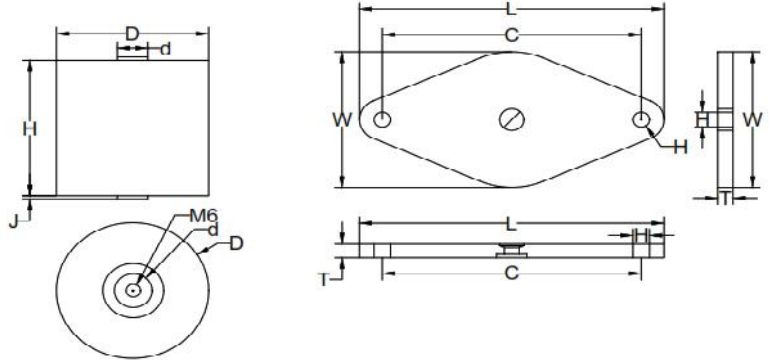




RF CAPACITOR

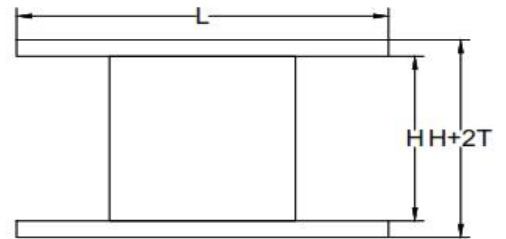
FEATURES:

Maximum current as well as frequency can be applied without excessive heat.
 Maximum value of reactive power can be handled without over heating
 Excellent performance for radio transmission
 Easy to mount (with or without flange)
 High quality epoxy insulation



SPECIFICATION:

Capacitance Range: 47 pF to 0.1 μ F
 Capacitance Tolerance: \pm 5% (J)
 Voltage Range: 1 to 30 kVpk
 Dissipation Factor (tan δ): 0.005 @ 1 kHz at 40°C .
 Operating Temperature: - 55°C to - 125°C
 Dielectric: Natural mica
 Insulation Resistance: 7500 M @ 100 Vdc
 Encapsulation: Epoxy moulded
 Terminals: M6 Threaded brass terminal with mountin flange (optional)
 Temperature Coefficient: 0 - 70 ppm / °C



APPLICATION:

Ideal for high voltage and high current circuit
 Broadcasting
 Welding
 Induction heating
 Other high frequency application



Product Type	Outer Dimension (Inch)		Electrode Dimension (Inch)		
	D	H	d	J	Thread Details
IRP - 1	2.0 \pm 0.031	2.0 \pm 0.031	0.500 \pm 0.015	0.062 \pm 0.010	1/4 - 28 UNF 0.218 depth
IRP - 2	2.5 \pm 0.031	2.5 \pm 0.031	0.500 \pm 0.015	0.062 \pm 0.010	1/4 - 28 UNF 0.218 depth
IRP - 3	3.5 \pm 0.031	3.5 \pm 0.031	0.750 \pm 0.015	0.062 \pm 0.010	3/8 - 24 UNF 0.312 depth
IRP - 4	3.5 \pm 0.031	5.0 \pm 0.031	0.750 \pm 0.015	0.062 \pm 0.010	3/8 - 24 UNF 0.312 depth

Product Type	Flange Dimension (Inch)				
	L	W	h	C	T
IRP - 1	3.812 \pm 0.031	2.000 \pm 0.031	0.272 \pm 0.003	3.250 \pm 0.015	0.250 \pm 0.015
IRP - 2	5.000 \pm 0.031	2.500 \pm 0.031	0.272 \pm 0.003	4.250 \pm 0.015	0.250 \pm 0.015
IRP - 3	6.500 \pm 0.031	3.500 \pm 0.031	0.383 \pm 0.003	5.750 \pm 0.015	0.250 \pm 0.015
IRP - 4	6.500 \pm 0.031	3.500 \pm 0.031	0.383 \pm 0.003	5.750 \pm 0.015	0.250 \pm 0.015



RF CAPACITOR

IRP - I Series

Part Number	Cap. (pF)	Maximum RMS Current (Amp) at			
		3 Mhz	1 Mhz	0.3 Mhz	0.1 Mhz
1,000 volts Peak Working Voltage					
IRP110E753J	75,000	18	22	22	16
IRP110E823J	82,000	18	22	22	16
IRP110E913J	91,000	18	22	22	16
IRP110E104J	100,000	18	22	22	18
1,500 volts Peak Working Voltage					
IRP115E303J	30,000	18	22	18	12
IRP115E333J	33,000	18	22	20	13
IRP115E363J	36,000	18	22	20	13
IRP115E393J	39,000	18	22	20	13
IRP115E433J	43,000	18	22	22	13
IRP115E473J	47,000	18	22	22	15
IRP115E513J	51,000	18	22	22	15
IRP115E563J	56,000	18	22	22	15
IRP115E623J	62,000	18	22	22	16
IRP115E683J	68,000	18	22	22	16
2,000 volts Peak Working Voltage					
IRP120E183J	18,000	18	20	16	11
IRP120E203J	20,000	18	22	18	11
IRP120E223J	22,000	18	22	18	11
IRP120E243J	24,000	18	22	18	12
IRP120E273J	27,000	18	22	18	12
3,000 volts Peak Working Voltage					
IRP130E123J	12,000	18	20	16	9.1
IRP130E133J	13,000	18	20	16	10
IRP130E153J	15,000	18	20	16	10
IRP130E163J	16,000	18	20	16	10
4,000 volts Peak Working Voltage					
IRP140E512J	5,100	16	16	12	6.2
IRP140E562J	5,600	16	18	13	6.8
IRP140E602J	6,000	16	18	13	7.5
IRP140E622J	6,200	16	18	13	7.5
IRP140E682J	6,800	16	18	13	7.5
IRP140E752J	7,500	18	18	13	7.5
IRP140E822J	8,200	18	20	15	8.2
IRP140E912J	9,100	18	20	15	8.2
IRP140E103J	10,000	18	20	15	9.1
IRP140E113J	11,000	18	20	15	9.1
6,000 volts Peak Working Voltage					
IRP160E470J	47	2	1.2	0.5	0.2
IRP160E500J	50	2	1.3	0.6	0.2
IRP160E510J	51	2	1.3	0.6	0.2
IRP160E560J	56	2.2	1.3	0.6	0.2
IRP160E620J	62	2.2	1.5	0.6	0.2
IRP160E680J	68	2.4	1.5	0.7	0.2
IRP160E750J	75	2.4	1.6	0.7	0.2
IRP160E820J	82	2.7	1.8	0.8	0.2

Part Number	Cap. (pF)	Maximum RMS Current (Amp) at			
		3 Mhz	1 Mhz	0.3 Mhz	0.1 Mhz
6,000 volts Peak Working Voltage					
IRP160E910J	91	2.7	1.8	0.9	0.3
IRP160E101J	100	3	2	0.9	0.3
IRP160E111J	110	3	2.2	1	0.3
IRP160E121J	120	3.3	2.2	1	0.3
IRP160E131J	130	3.3	2.4	1.1	0.4
IRP160E151J	150	3.6	2.4	1.2	0.4
IRP160E161J	160	3.9	2.7	1.3	0.4
IRP160E181J	180	4.3	3	1.5	0.5
IRP160E201J	200	4.3	3	1.5	0.5
IRP160E221J	220	4.7	3.3	1.6	0.6
IRP160E241J	240	4.7	3.6	1.8	0.6
IRP160E271J	270	5.1	3.6	2	0.6
IRP160E301J	300	5.1	3.9	2	0.7
IRP160E331J	330	5.6	4.3	2.2	0.8
IRP160E361J	360	6.2	4.3	2.4	0.8
IRP160E391J	390	6.2	4.7	2.7	0.8
IRP160E401J	400	6.2	4.7	2.7	0.8
IRP160E431J	430	6.8	4.7	2.7	0.8
IRP160E471J	470	6.8	5.1	3	0.9
IRP160E501J	500	6.8	5.1	3	1
IRP160E511J	510	6.8	5.1	3	1
IRP160E561J	560	7.5	5.6	3.3	1.1
IRP160E621J	620	8.2	6.2	3.6	1.2
IRP160E681J	680	8.2	6.2	3.9	1.3
IRP160E751J	750	8.2	6.8	3.9	1.5
IRP160E821J	820	9.1	6.8	4.3	1.5
IRP160E911J	910	9.1	7.5	4.7	1.6
IRP160E102J	1000	10	7.5	5.1	1.8
IRP160E112J	1100	10	8.2	5.1	2
IRP160E122J	1200	11	8.2	5.6	2.2
IRP160E132J	1300	11	9.1	6.2	2.2
IRP160E152J	1500	12	9.1	6.2	2.4
IRP160E162J	1600	12	10	6.8	2.7
IRP160E182J	1800	13	11	7.5	3
IRP160E202J	2000	13	11	7.5	3.3
IRP160E222J	2200	13	12	8.2	3.6
IRP160E242J	2400	15	13	9.1	3.9
IRP160E272J	2700	15	13	9.1	3.9
IRP160E302J	3000	15	13	9.1	4.3
IRP160E332J	3300	15	15	10	4.7
IRP160E362J	3600	16	15	11	5.1
IRP160E392J	3900	16	15	11	5.6
IRP160E402J	4000	16	15	11	5.6
IRP160E432J	4300	16	15	11	5.6
IRP160E472J	4700	16	16	12	6.2
IRP160E502J	5000	16	16	12	6.2



RF CAPACITOR

IRP - II Series

Part Number	Cap. (pF)	Maximum RMS Current (Amp) at			
		3 Mhz	1 Mhz	0.3 Mhz	0.1 Mhz
1,500 volts Peak Working Voltage					
IRP215E753J	75,000	20	39	33	20
IRP215E823J	82,000	20	39	33	20
IRP215E913J	91,000	20	39	33	20
IRP215E104J	100,000	20	39	36	20
2,000 volts Peak Working Voltage					
IRP220E303J	30,000	20	33	24	15
IRP220E333J	33,000	20	33	24	15
IRP220E363J	36,000	20	33	27	16
IRP220E393J	39,000	20	36	27	16
IRP220E433J	43,000	20	36	27	16
IRP220E473J	47,000	20	36	27	18
IRP220E513J	51,000	20	36	30	18
IRP220E563J	56,000	20	36	30	18
IRP220E623J	62,000	20	39	30	18
IRP220E683J	68,000	20	39	33	20
3,000 volts Peak Working Voltage					
IRP230E183J	18,000	20	30	20	12
IRP230E203J	20,000	20	30	22	13
IRP230E223J	22,000	20	30	22	13
IRP230E243J	24,000	20	33	24	13
IRP230E273J	27,000	20	33	24	13
4,000 volts Peak Working Voltage					
IRP240E123J	12,000	20	27	18	10
IRP240E133J	13,000	20	27	20	10
IRP240E153J	15,000	20	27	20	11
IRP240E163J	16,000	20	27	20	11
5,000 volts Peak Working Voltage					
IRP250E562J	5,600	20	20	13	6.8
IRP250E602J	6,000	20	22	15	6.8
IRP250E622J	6,200	20	22	15	6.8
IRP250E682J	6,800	20	22	15	7.5
IRP250E752J	7,500	20	22	15	7.5
IRP250E822J	8,200	20	24	16	8.2
IRP250E912J	9,100	20	24	16	8.2
IRP250E103J	10,000	20	24	18	9.1
IRP250E113J	11,000	20	27	18	9.1
6,000 volts Peak Working Voltage					
IRP260E472J	4,700	20	20	13	6.2
IRP260E502J	5,000	20	20	13	6.2
IRP260E512J	5,100	20	20	13	6.2
8,000 volts Peak Working Voltage					
IRP280E222J	2200	18	13	9.1	3.9
IRP280E242J	2400	18	15	10	4.3
IRP280E272J	2700	18	15	10	4.3
IRP280E302J	3000	18	16	10	4.7
IRP280E332J	3300	20	16	11	4.7
IRP280E362J	3600	20	18	11	5.1

Part Number	Cap. (pF)	Maximum RMS Current (Amp) at			
		3 Mhz	1 Mhz	0.3 Mhz	0.1 Mhz
8,000 volts Peak Working Voltage					
IRP280E392J	3900	20	18	12	5.6
IRP280E402J	4000	20	18	12	5.6
IRP280E432J	4300	20	18	12	5.6
10,000 volts Peak Working Voltage					
IRP2100E470J	47	2.7	2	0.9	0.3
IRP2100E510J	51	2.7	2	1	0.3
IRP2100E560J	56	3	2.2	1	0.3
IRP2100E620J	62	3.3	2.2	1.1	0.3
IRP2100E680J	68	3.3	2.4	1.2	0.3
IRP2100E750J	75	3.6	2.4	1.2	0.4
IRP2100E820J	82	3.6	2.7	1.3	0.4
IRP2100E910J	91	3.9	2.7	1.5	0.4
IRP2100E101J	100	4.3	3	1.5	0.5
IRP2100E111J	110	4.3	3	1.6	0.5
IRP2100E121J	120	4.7	3.3	1.6	0.6
IRP2100E131J	130	4.7	3.6	1.8	0.6
IRP2100E151J	150	5.1	3.6	1.8	0.6
IRP2100E161J	160	5.1	3.9	2	0.8
IRP2100E181J	180	5.6	4.3	2.2	0.8
IRP2100E201J	200	6.2	4.3	2.4	0.8
IRP2100E221J	220	6.2	4.7	2.4	0.9
IRP2100E241J	240	6.8	5.1	2.7	1
IRP2100E251J	250	6.8	5.1	2.7	1
IRP2100E271J	270	6.8	5.1	2.7	1
IRP2100E301J	300	7.5	5.6	3	1.1
IRP2100E331J	330	7.5	5.6	3	1.2
IRP2100E361J	360	8.2	6.2	3.6	1.2
IRP2100E391J	390	8.2	6.2	3.6	1.3
IRP2100E431J	430	9.1	6.2	3.6	1.3
IRP2100E471J	470	9.1	6.8	3.9	1.5
IRP2100E501J	500	9.1	6.8	3.9	1.6
IRP2100E511J	510	9.1	6.8	3.9	1.6
IRP2100E561J	560	10	7.5	4.3	1.6
IRP2100E621J	620	11	8.2	4.7	1.8
IRP2100E681J	680	11	8.2	4.7	1.8
IRP2100E751J	750	11	8.2	5.1	2
IRP2100E821J	820	12	9.1	5.1	2.2
IRP2100E911J	910	12	9.1	5.6	2.2
IRP2100E102J	1000	12	10	6.2	2.4
IRP2100E112J	1100	13	10	6.2	2.7
IRP2100E122J	1200	15	11	6.8	2.7
IRP2100E132J	1300	15	11	7.5	2.7
IRP2100E152J	1500	15	12	7.5	3
IRP2100E162J	1600	16	12	8.2	3.3
IRP2100E182J	1800	16	13	8.2	3.6
IRP2100E202J	2000	16	13	10	3.6



RF CAPACITOR

IRP - III Series

Part Number	Cap. (pF)	Maximum RMS Current (Amp) at			
		3 Mhz	1 Mhz	0.3 Mhz	0.1 Mhz
2,000 volts Peak Working Voltage					
IRP320E753J	75,000	24	51	39	24
IRP320E823J	82,000	24	51	39	24
IRP320E913J	91,000	24	51	39	24
IRP320E104J	100,000	24	51	39	24
3,000 volts Peak Working Voltage					
IRP330E273J	27,000	24	51	33	18
IRP330E303J	30,000	24	51	33	20
IRP330E333J	33,000	24	51	33	20
IRP330E363J	36,000	24	51	36	22
IRP330E393J	39,000	24	51	36	22
IRP330E433J	43,000	24	51	36	22
IRP330E473J	47,000	24	51	36	22
IRP330E513J	51,000	24	51	36	24
IRP330E563J	56,000	24	51	36	24
IRP330E623J	62,000	24	51	39	24
IRP330E683J	68,000	24	51	39	24
5,000 volts Peak Working Voltage					
IRP350E123J	12,000	24	43	27	13
IRP350E133J	13,000	24	43	27	13
IRP350E153J	15,000	24	43	27	15
IRP350E163J	16,000	24	47	30	15
IRP350E183J	18,000	24	47	30	16
IRP350E203J	20,000	24	47	30	18
IRP350E223J	22,000	24	47	30	18
IRP350E243J	24,000	24	51	33	18
8,000 volts Peak Working Voltage					
IRP380E913J	9,100	24	39	24	12
IRP380E103J	10,000	24	39	24	12
IRP380E113J	11,000	24	39	27	13
10,000 volts Peak Working Voltage					
IRP3100E472J	4,700	22	27	18	8.2
IRP3100E502J	5,000	24	30	18	9.1
IRP3100E512J	5,100	24	30	18	9.1
IRP3100E562J	5,600	24	33	20	9.1
IRP3100E602J	6,000	24	33	20	6.8
IRP3100E622J	6,200	24	33	20	6.8
IRP3100E682J	6,800	24	33	20	7.5
IRP3100E752J	7,500	24	36	22	7.5
IRP3100E802J	8,000	24	36	22	8.2
IRP3100E822J	8,200	24	36	22	8.2
12,000 volts Peak Working Voltage					
IRP3120E222J	2,200	20	20	12	5.6
IRP3100E242J	2,400	20	22	13	6.2
IRP3100E272J	2,700	20	22	13	6.2
IRP3100E302J	3000	20	24	15	6.8
IRP3100E332J	3300	22	24	15	6.8
IRP3100E362J	3600	22	24	15	7.5
IRP3100E392J	3900	22	27	16	7.5

Part Number	Cap. (pF)	Maximum RMS Current (Amp) at			
		3 Mhz	1 Mhz	0.3 Mhz	0.1 Mhz
12,000 volts Peak Working Voltage					
IRP3100E402J	4000	22	27	16	7.5
IRP3100E432J	4300	22	27	16	8.2
15,000 volts Peak Working Voltage					
IRP3150E122J	1,200	16	15	8.2	4.3
IRP3150E132J	1,300	16	15	9.1	4.3
IRP3150E152J	1,500	16	16	9.1	4.7
IRP3150E162J	1,600	18	18	10	4.7
IRP3150E182J	1,800	18	18	11	5.1
IRP3150E202J	2,000	18	20	11	5.6
20,000 volts Peak Working Voltage					
IRP3200E470J	47	5.1	2.2	0.5	0.1
IRP3200E510J	50	5.1	2.4	0.5	0.2
IRP3200E510J	51	5.1	2.4	0.5	0.2
IRP3200E560J	56	5.6	2.4	0.6	0.2
IRP3200E620J	62	5.6	2.7	0.7	0.2
IRP3200E680J	68	5.6	2.7	0.8	0.2
IRP3200E750J	75	6.2	3	0.9	0.3
IRP3200E820J	82	6.2	3	1	0.3
IRP3200E910J	91	6.8	3.3	1.1	0.4
IRP3200E101J	100	6.8	3.6	1.3	0.5
IRP3200E111J	110	7.5	3.9	1.5	0.5
IRP3200E121J	120	7.5	4.3	1.6	0.6
IRP3200E131J	130	8.2	4.3	1.8	0.7
IRP3200E151J	150	8.2	4.7	2	0.8
IRP3200E161J	160	9.1	5.1	2.2	0.9
IRP3200E181J	180	9.1	5.1	2.4	1
IRP3200E201J	200	9.1	5.6	2.7	1.1
IRP3200E221J	220	10	6.2	3	1.2
IRP3200E241J	240	10	6.2	3.6	1.3
IRP3200E251J	250	10	6.2	3.6	1.3
IRP3200E271J	270	10	6.8	3.6	1.5
IRP3200E301J	300	10	6.8	3.9	1.6
IRP3200E331J	330	11	7.5	3.9	1.6
IRP3200E361J	360	11	7.5	3.9	1.8
IRP3200E391J	390	11	8.2	4.3	2
IRP3200E431J	430	12	8.2	4.7	2.2
IRP3200E471J	470	12	9.1	4.7	2.2
IRP3200E501J	500	12	9.1	5.1	2.3
IRP3200E511J	510	12	9.1	5.1	2.3
IRP3200E561J	560	13	10	5.6	2.7
IRP3200E621J	620	13	11	6.2	2.7
IRP3200E681J	680	13	11	6.2	2.7
IRP3200E751J	750	13	12	6.8	3
IRP3200E801J	800	15	12	6.8	3.3
IRP3200E821J	820	15	12	6.8	3.3
IRP3200E911J	910	15	13	7.5	3.6
IRP3200E102J	1000	15	13	7.5	3.6
IRP3200E112J	1100	16	15	8.2	3.9



RF CAPACITOR

IRP - IV Series

Part Number	Cap. (pF)	Maximum RMS Current (Amp) at			
		3 Mhz	1 Mhz	0.3 Mhz	0.1 Mhz
3,000 volts Peak Working Voltage					
IRP430E823J	82,000	30	62	43	39
IRP430E913J	91,000	30	62	43	39
IRP430E104J	100,000	30	62	43	39
4,000 volts Peak Working Voltage					
IRP440E683J	68,000	30	56	39	36
IRP440E303J	75,000	30	62	43	36
5,000 volts Peak Working Voltage					
IRP450E333J	33,000	30	56	39	27
IRP450E363J	36,000	30	56	39	30
IRP450E393J	39,000	30	56	39	30
IRP450E403J	40,000	30	56	39	30
IRP450E433J	43,000	30	56	39	30
IRP450E473J	47,000	30	56	39	30
IRP450E513J	51,000	30	56	39	33
IRP450E563J	56,000	30	56	39	33
IRP450E623J	62,000	30	56	39	33
6,000 volts Peak Working Voltage					
IRP460E183J	18,000	30	51	36	22
IRP460E203J	20,000	30	51	36	24
IRP460E223J	22,000	30	51	36	24
IRP460E243J	24,000	30	56	39	27
IRP460E273J	27,000	30	56	39	27
IRP460E303J	30,000	30	56	39	27
8,000 volts Peak Working Voltage					
IRP480E123J	12,000	30	47	30	20
IRP480E133J	13,000	30	47	30	20
IRP480E153J	15,000	30	47	33	20
IRP480E163J	16,000	30	47	33	22
10,000 volts Peak Working Voltage					
IRP4100E103J	10,000	30	43	30	18
IRP4100E113J	11,000	30	43	30	18
12,000 volts Peak Working Voltage					
IRP4120E802J	8,000	30	39	27	16
IRP4120E822J	8,200	30	39	27	16
IRP4120E912J	9,100	30	39	27	16
15,000 volts Peak Working Voltage					
IRP4150E432J	4,300	27	30	20	11
IRP4150E472J	4,700	27	30	22	12
IRP4150E502J	5,000	27	33	22	12
IRP4150E512J	5,100	27	33	22	12
IRP4150E562J	5,600	27	36	22	13
IRP4150E602J	6,000	27	36	24	15
IRP4150E622J	6,200	27	36	24	15
IRP4150E682J	6,800	27	36	24	15
IRP4150E752J	7,500	22	36	27	16

Part Number	Cap. (pF)	Maximum RMS Current (Amp) at			
		3 Mhz	1 Mhz	0.3 Mhz	0.1 Mhz
20,000 volts Peak Working Voltage					
IRP4200E202J	2,000	22	22	15	7.5
IRP4200E222J	2,200	22	24	15	8.2
IRP4200E242J	2,400	22	24	16	8.2
IRP4200E272J	2,700	22	24	16	9.1
IRP4200E302J	3,000	24	27	18	9.1
IRP4200E332J	3,300	24	27	18	10
IRP4200E362J	3,600	24	27	18	10
IRP4200E392J	3,900	24	30	20	11
IRP4200E402J	4,000	24	30	20	11
25,000 volts Peak Working Voltage					
IRP4250E112J	1,100	18	18	11	5.6
IRP4250E122J	1,200	18	18	11	5.6
IRP4250E132J	1,300	18	18	12	6.2
IRP4250E152J	1,500	20	20	12	6.2
IRP4250E162J	1,600	20	20	13	6.8
IRP4250E182J	1,800	20	22	13	7.5
30,000 volts Peak Working Voltage					
IRP4300E101J	100	7.5	5.1	2	0.7
IRP4300E111J	110	8.2	5.1	2.2	0.8
IRP4300E121J	120	8.2	5.6	2.4	1
IRP4300E131J	130	9.1	6.2	2.7	1.1
IRP4300E151J	150	9.1	6.2	3	1.3
IRP4300E161J	160	9.1	6.8	3.3	1.5
IRP3200E181J	180	10	6.8	3.6	1.6
IRP4300E201J	200	10	7.5	3.9	1.8
IRP4300E221J	220	11	7.5	3.9	2
IRP4300E241J	240	11	8.2	4.3	2
IRP4300E251J	250	11	8.2	4.3	2
IRP4300E271J	270	11	9.1	4.7	2.2
IRP4300E301J	300	12	9.1	5.1	2.4
IRP4300E331J	330	12	9.1	5.1	2.4
IRP4300E361J	360	12	10	5.6	2.7
IRP4300E391J	390	13	11	6.2	3
IRP4300E431J	430	13	11	6.2	3
IRP4300E471J	470	13	11	6.8	3.3
IRP4300E501J	500	13	12	6.8	3.3
IRP4300E511J	510	13	12	6.8	3.3
IRP4300E561J	560	15	13	7.5	3.6
IRP4300E621J	620	15	13	8.2	3.9
IRP4300E681J	680	15	13	8.2	4.3
IRP4300E821J	750	16	15	8.2	4.3
IRP4300E801J	800	16	15	9.1	4.7
IRP4300E821J	820	16	15	9.1	4.7
IRP4300E911J	910	16	15	10	5.1
IRP4300E102J	1,000	18	16	10	5.1



RF CAPACITOR

FREQUENCY DERATING:-

